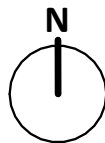


1 OVERALL EXISTING FLOOR PLAN

1/8" = 1'-0"

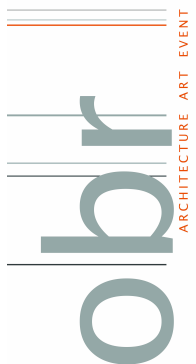


GENERAL NOTES

1. REFER TO SHEETS G1.0 - G1.3 FOR FURTHER INFORMATION.
2. EXISTING EQUIPMENT TO BE PROTECTED IN PLACE U.O.N.
3. CONTRACTOR TO FIELD VERIFY ALL DIMENSIONS.
4. PATCH AND REPAIR WALL AND FLOOR FINISHES AS REQUIRED.
5. ASBESTOS AND LEAD HAZARDOUS MATERIALS ARE PRESENT IN THE BUILDING AND ARE KNOW TO BE PRESENT IN THE FOLLOWING ITEMS BUT NOT LIMITED TO: DOORS, FRAMES, EAVES, PLASTIC, FLOOR TILE, MASTIC, ETC. ABATEMENT IS REQUIRED WHERE DEMOLITION OCCURS. REFER TO THE HAZARDOUS MATERIALS REPORT & GENERAL NOTES ON SHEET G1.2 FOR ADDITIONAL INFORMATION.
6. HAZARDOUS MATERIAL REPORT IDENTIFIES TYPICAL LOCATIONS OF HAZARDOUS MATERIALS. CONTRACTOR SHALL VERIFY ALL LOCATIONS OF HAZARDOUS MATERIALS PRIOR TO COMMENCING WORK.
7. THE CONTRACTOR SHALL HIRE A SITE LOCATOR TO VERIFY LOCATION OF ALL UTILITIES PRIOR TO WORK. THE CONSTRUCTION SHALL BE AWARE OF POTENTIAL HAZARDS FROM DEMOLITION WORK NEAR UTILITIES, PIPES AND CONDUIT ENCOUNTERED WHEN DEMOLISHING PARTITIONS AND AREAS WHICH ARE TO REMAIN IN USE SHALL BE REROUTED AND CONCEALED. THOSE WHICH ARE TO BE ABANDONED SHALL BE CAPPED AND CONCEALED.

LEGEND

- SCOPE OF WORK
- == (E) WALL TO REMAIN - PROTECT IN PLACE
- ⤴ (E) DOOR TO REMAIN - PROTECT IN PLACE
- ▨ NOT IN SCOPE



BOARD OF EDUCATION

obdARCHITECTURE
2419 EL CAJON BLVD., SAN DIEGO, CA 92104

OVERALL EXISTING FLOOR PLAN

SAN DIEGO UNIFIED SCHOOL DISTRICT
KITCHEN MODIFICATIONS GROUP 6
CLAIREMONT HIGH SCHOOL
4150 UTE DR, SAN DIEGO, CA 92117
DSA SUBMITTAL SET

PROJECT NO.	SDUF-006A
R.S.	A.P.
FILE NAME	
DATE	02/20/2025
REVISIONS	SHEET NO.
	A1.0